

INTR/.  
SYSTEMS

HIGH PERFORMANCE ENTRANCE MATTING

High Performance Entrance Matting for:

# HEALTHCARE

Hospitals, Care Homes, Surgeries

Experts in the exacting needs of hospitals, care homes and surgeries, INTRAsystems can provide the hygienic and hard-wearing entrance matting solutions that the healthcare sector demands. Exceptionally durable to cope with high traffic flow, and featuring effective soil and moisture removal, you can be confident that your entrance will be both safe and sanitary for public use.

Hygiene is absolutely critical, in healthcare environments, so entrance matting should be quick and easy to thoroughly clean. It is recommended that matting is pressure or steam cleaned periodically, and a system that is straightforward to remove from the matwell is therefore ideal.

Healthcare settings also experience consistent high traffic flow, often 24 hours a day, 7 days a week. Durability and efficiency are therefore also essential functions for a high performance barrier entrance matting system in order to cope with the continued traffic flow.



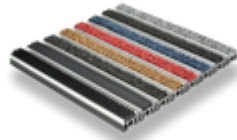
## SPECIFICATION GUIDELINES

System Specification	Hardwearing material such as aluminium or PVC, with high performance inserts. External matting recommended with rubber inserts, combination rubber/fibre inserts within circular doors etc, polyamide fibre inserts internally
Matwell Size	Matwells should cover the full width of the entrance doors and recommended to extend between 5-8m in the traffic direction. Where matwell size is restricted, surface bonded high performance fibre can be considered for increased performance
Volume of Traffic	High Traffic areas with regular flow 24/7
Type of Traffic	Heavy Wear: Foot traffic / Wheeled stretchers / Wheelchairs etc.
External Environment	Often exposed areas with hard surfaces – prevention of moisture ingress is primary
Internal Environment	Effective soil & moisture removal for protection of internal floor finishes and the prevention of slips on hard floors due to surface moisture

---

## INTRAflex XT

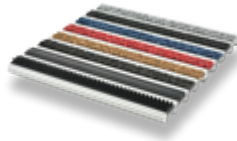
The flagship Heavy Duty aluminum matting product



---

## INTRAform

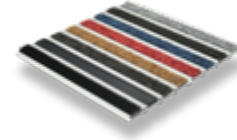
Heavy Duty 17mm aluminum plank system



---

## INTRAform Low Profile

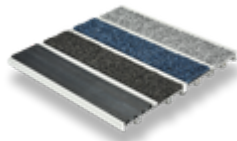
Heavy Duty 12mm aluminum plank system



---

## INTRAform DM

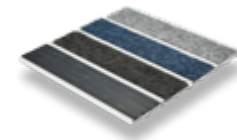
Heavy Duty 17mm aluminum plank system with double width-inserts sections



---

## INTRAform DM Low Profile

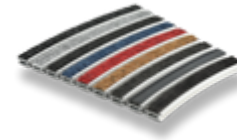
Heavy Duty 12mm aluminum plank system with double width-inserts sections



---

## INTRAflex Radial

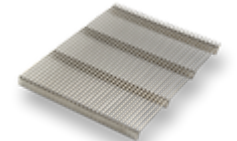
A unique curved system for optimum aesthetics



---

## INTRAgrille

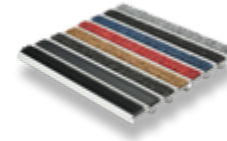
Stainless steel grilles for unique applications



---

## INTRAflo

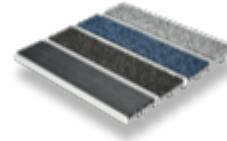
Heavy Duty Aluminium Entrance Matting for highly efficient moisture removal and drainage



---

## INTRAflo Plus

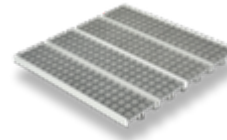
Heavy Duty 17mm aluminum plank system with double width-inserts sections



---

## INTRAform FR

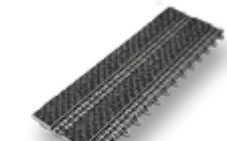
Specialist system for high fire risk areas



---

## INTRALink

Heavy Duty 16mm interlocking tile system



---

## INTRALink Low Profile

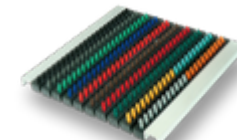
Heavy Duty 12mm interlocking tile system



---

## INTRABrush

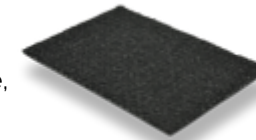
High quality bristle brush Entrance Matting for external applications



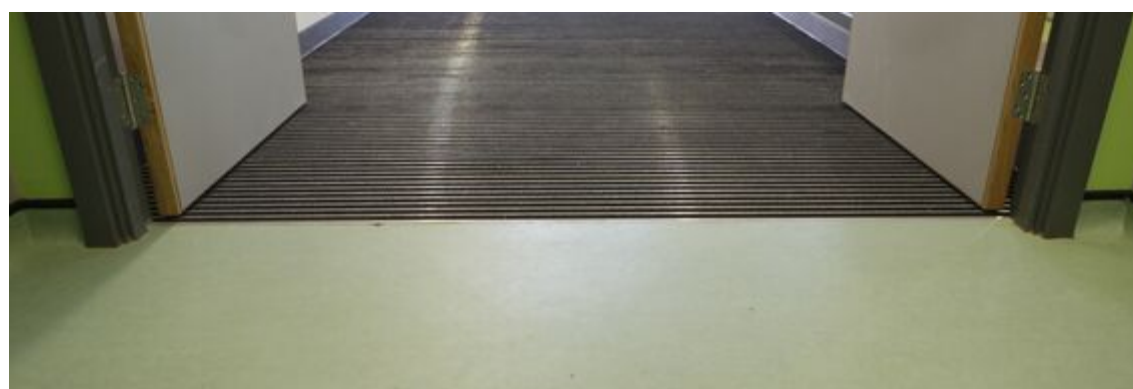
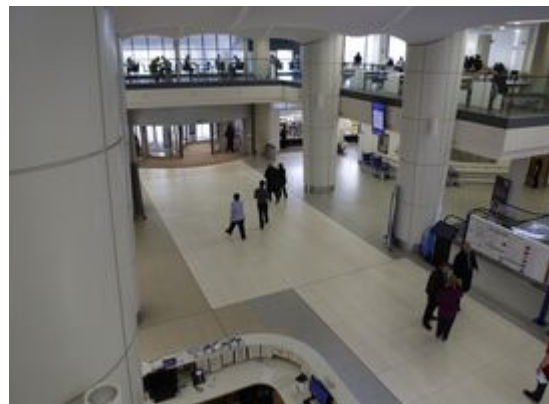
---

## INTRALux Fibre

Range Includes INTRALux Select, Elite, Linear, Ultima, Premier, Grafic & Rib



[VIEW FULL RANGE ONLINE](#)



INTRAS.  
SYSTEMS

14 HEADLANDS BUSINESS PARK, SALISBURY ROAD, BLASHFORD, RINGWOOD, BH24 3PB  
01425 472000 WWW.INTRASYSTEMS.CO.UK