

# INTR/. SYSTEMS

HIGH PERFORMANCE ENTRANCE MATTING

High Performance Entrance Matting for:

# RETAIL STORES

Retail Chains, Supermarkets

Whether a boutique clothing store, high street giant or bustling supermarket, INTRAsystems can help your retail store's aesthetic appeal and safety requirements with custom-designed entrance matting. Durable, simple to clean and able to remove large volumes of dirt and moisture from consistently high footfall, your matting solution can provide a practical yet inviting entrance on a budget.

Corporate buying power demands high performance at minimum cost, and therefore the INTRAform and INTRALink products in particular, are suited to these environments. High stock levels, short lead times and flexible installation teams make us the supplier of choice for this demanding sector.



# RETAIL STORES

## SPECIFICATION GUIDELINES

### System Specification

Hardwearing material such as Aluminium or PVC, with high performance inserts. External matting recommended with rubber inserts and internal matting with polyamide fibre inserts

### Matwell Size

Matwells should cover the full width of the entrance doors and recommended to extend between 4-6m in the traffic direction. Where matwell size is restricted, surface bonded high performance fibre can be considered for increased performance

### Volume of Traffic

Medium to High, depending on size/capacity of the store

### Type of Traffic

Heavy wear: Foot traffic / Shopping Trolleys / Wheelchairs etc

### External Environment

Often exposed areas with hard surfaces – prevention of moisture ingress is primary

### Internal Environment

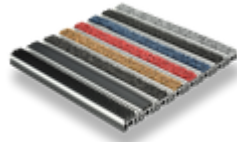
Effective soil & moisture removal for protection of internal floor finishes and the prevention of slips on hard floors due to surface moisture



---

## INTRAflex XT

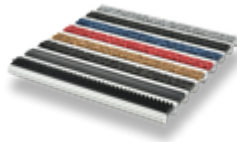
The flagship Heavy Duty aluminum matting product



---

## INTRAform

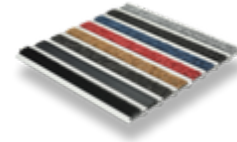
Heavy Duty 17mm aluminum plank system



---

## INTRAform Low Profile

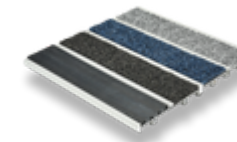
Heavy Duty 12mm aluminum plank system



---

## INTRAform DM

Heavy Duty 17mm aluminum plank system with double width-inserts sections



---

## INTRAform DM Low Profile

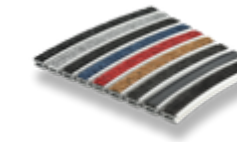
Heavy Duty 12mm aluminum plank system with double width-inserts sections



---

## INTRAflex Radial

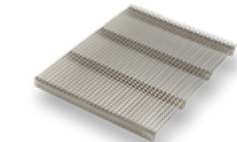
A unique curved system for optimum aesthetics



---

## INTRAgrille

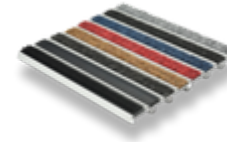
Stainless steel grilles for unique applications



---

## INTRAflo

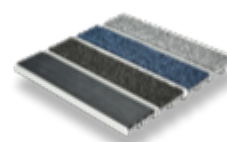
Heavy Duty Aluminium Entrance Matting for highly efficient moisture removal and drainage



---

## INTRAflo Plus

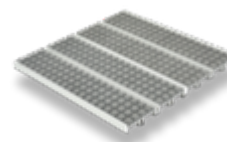
Heavy Duty 17mm aluminum plank system with double width-inserts sections



---

## INTRAform FR

Specialist system for high fire risk areas



---

## INTRALink

Heavy Duty 16mm interlocking tile system



---

## INTRALink Low Profile

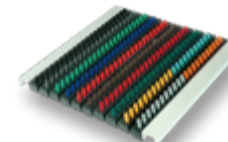
Heavy Duty 12mm interlocking tile system



---

## INTRAbrush

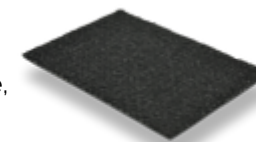
High quality bristle brush Entrance Matting for external applications



---

## INTRALux Fibre

Range Includes INTRALux Select, Elite, Linear, Ultima, Premier, Grafic & Rib



[VIEW FULL RANGE ONLINE](#)













14 HEADLANDS BUSINESS PARK, SALISBURY ROAD, BLASHFORD, RINGWOOD, BH24 3PB  
01425 472000 [WWW.INTRASYSTEMS.CO.UK](http://WWW.INTRASYSTEMS.CO.UK)