

INTRAgrille XT DM

A superb example of engineered stainless steel. This versatile product offers the performance advantage of double width fibre for optimum moisture absorption.



STRENGTH RATING - HIGH



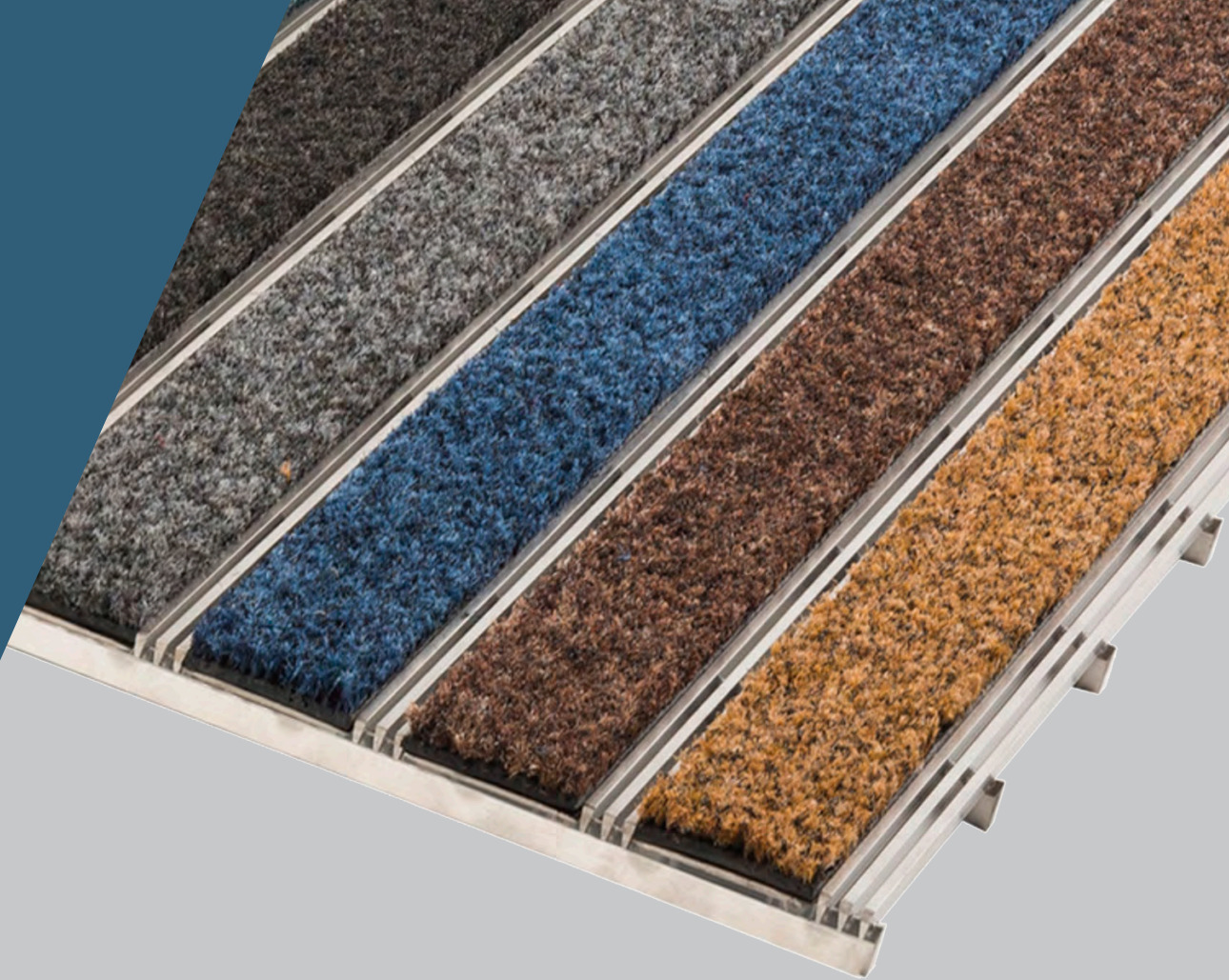
ZONAL OPTION - 2



WIDE RANGE OF DESIGN
OPTIONS



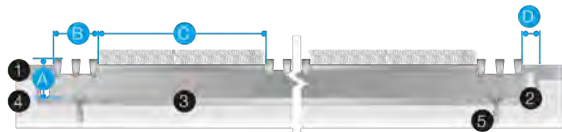
WARRANTY - 10 YEARS



SPECIFICATION

Product Reference	INTRAGrille XT Double Module Stainless Steel Entrance Matting
Strength Rating	High - suitable for areas with high foot and wheeled traffic
Zonal Location	Zone 2 inserts for internal areas Surface mounted applications with use of ramped edging
Construction	Premium stainless steel profile. Heel Proof Open Construction – allows dirt and moisture to fall through into the matwell below Profile: INTG42 Slot: 3MM Insert width: 57mm Support: 10x3MM TQ: 70 w
Typical Application	High Traffic locations such as Public Buildings, Commercial Offices, travel termini etc
Design Options	Wide range of design options available
Weight	23.4kg/m2
Matwell Framing	INT019
Slip Rating	Will vary with insert, in excess of PTV 38
Warranty	10 years
Sustainability	100% stainless steel. All inserts recyclable/re-usable 100% Econyl Fibre (Premier and Elite)

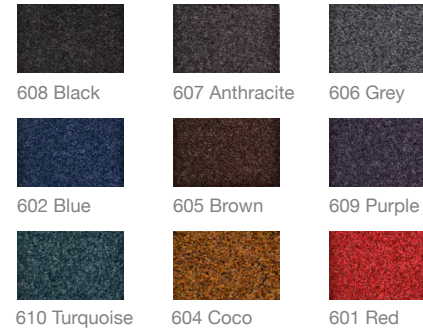
PROFILE



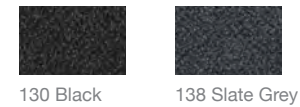
A	14mm	1	Finished Floor surface
B	15mm	2	Recessed matwell frame
C	57mm Profile	3	Levelling latex to matwell base
D	6mm	4	Screed sub-floor
		5	Screw fixings

INSERTS

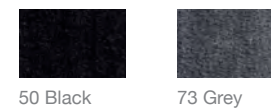
Elite Polyamide



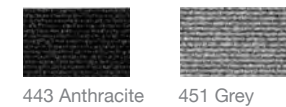
Premier Polyamide



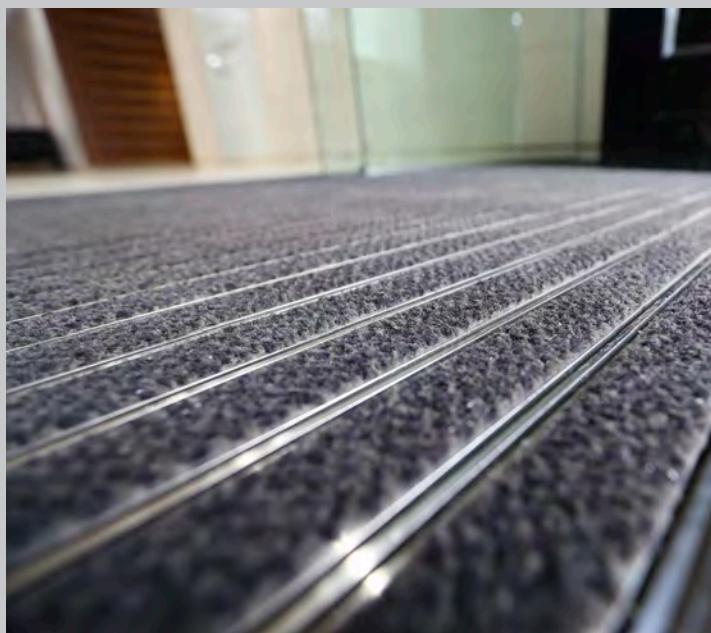
Select Polyamide



Linear Polypropylene







INTRAgrille XT / XT DM



- 1. 5 Wellbeck Street
- 2. 5 Wellbeck Street
- 3. 5 Wellbeck Street
- 4. 5 Wellbeck Street



INTRAS.
SYSTEMS

14 HEADLANDS BUSINESS PARK, SALISBURY ROAD, BLASHFORD, RINGWOOD, BH24 3PB
01425 472000 WWW.INTRASYSTEMS.CO.UK