

INTRALux Gripfit

A revolutionary surface mounted Entrance Matting solution for retro-fit applications; designed for rapid installation with no adhesive and no visible fixings.



STRENGTH RATING - HIGH



ZONAL OPTION - 2 AND 3



MID RANGE OF DESIGN
OPTIONS



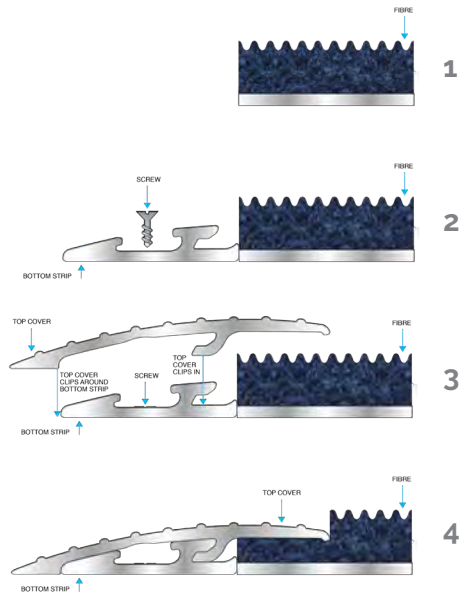
WARRANTY - 5 YEARS



SPECIFICATION

Product Reference	Gripfit Surface Mounted Entrance Matting Solution
Strength Rating	High - for use in high traffic areas and suitable for all wheeled traffic including trolleys and forklifts
Typical Application	High Traffic locations such as Public Buildings, Commercial Offices, travel termini etc
Design Options	Mid range of design options available
Slip Rating	Will vary with insert, in excess of PTV 38
Warranty	5 years
Sustainability	100% recycled aluminum. All inserts recyclable/re-usable 100% Econyl Fibre (Premier and Elite)

PROFILE

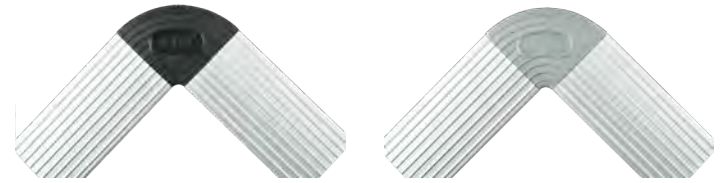


PROFILE DIMENSIONS

Height	7.5mm
Base profile length	1910mm
Cover profile	945mm
Corner section	55x55mm

Allow 10mm for the base trim to fit in.

CORNER OPTIONS



Gripfit Black Corner

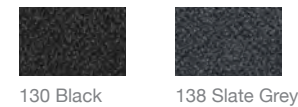
Gripfit Grey Corner

COMPATIBLE SYSTEMS

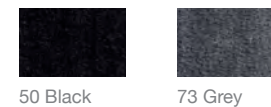
Elite Polyamide



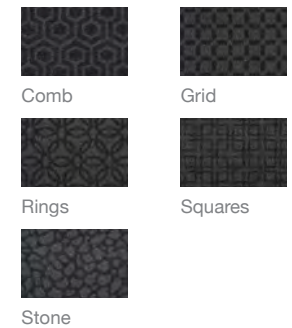
Premier Polyamide



Select Polyamide



INTRALux Grafic





CAIS



HSBC



HSBC





INTRALux Gripfit



- 1. Intu, Milton Keynes
- 2. Intu, Milton Keynes
- 3. Intu, Milton Keynes

INTRAS.
SYSTEMS

14 HEADLANDS BUSINESS PARK, SALISBURY ROAD, BLASHFORD, RINGWOOD, BH24 3PB
01425 472000 WWW.INTRASYSTEMS.CO.UK