

# OPERATION AND MAINTENANCE MANUAL

2024/V1

INTRV.

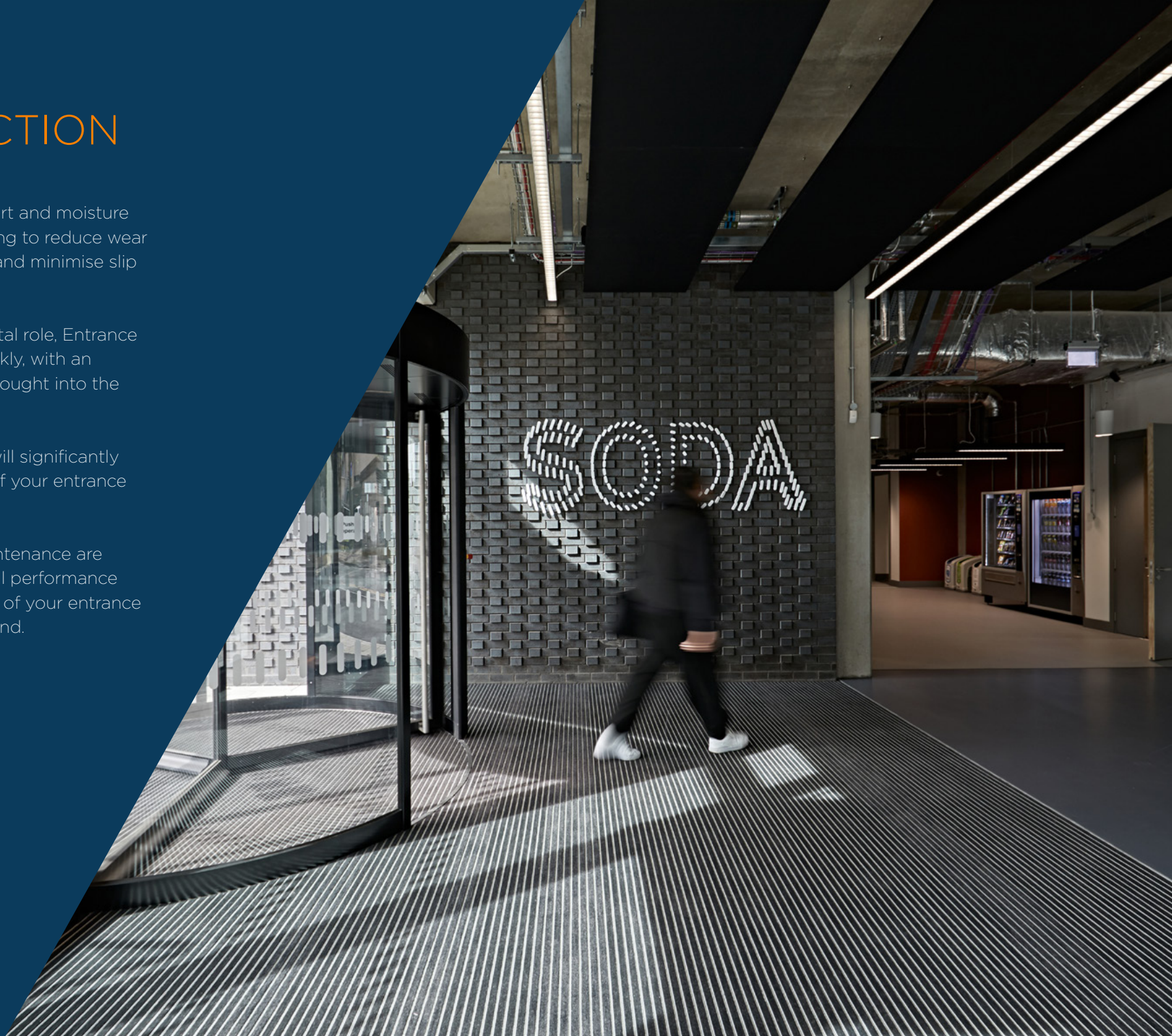
# INTRODUCTION

Entrance matting keeps dirt and moisture out of your building, helping to reduce wear and tear to your interiors and minimise slip and trip hazards.

In playing this small but vital role, Entrance Matting can get dirty, quickly, with an average of 0.58g of soil brought into the building by every visitor.

Allowing dirt to build up will significantly reduce the performance of your entrance mat.

Regular cleaning and maintenance are essential to ensure optimal performance and maximise the lifespan of your entrance matting and flooring beyond.





# HOW TO CLEAN YOUR ENTRANCE MATTING

## ALUMINIUM RECESSED

Matting should be cleaned daily with a vacuum with a heavy-duty rotary power brush or beater bar to remove deeply embedded dirt particles, especially in heavy traffic areas. It is important that cleaning is carried out when the mat is dry, as the product will release soil more easily.

## ALUMINIUM RECESSED - OPEN CONSTRUCTION

Open construction Entrance Matting Systems allow the fall-away of moisture and dirt into the matwell recess. To maintain performance and increase lifespan, open construction matting should be lifted out of the matwell base periodically to remove debris and fully clean the base area. Depending on footfall and location, this should be done monthly or quarterly.

Rollable matting products can simply be rolled away from the base and rolled back into place after cleaning, taking care not to drag the matting.

We recommend that products on a drainable construction base are removed every 2-3 years to thoroughly clean the base area and remove debris.

## INTRALUX FIBRE

A water extraction machine is required to remove greasy soiling. Heavily soiled areas should be pre-treated before the machine is used. A final run with clean water (no detergent) is recommended to remove the last residues of detergent.

Dry chemical systems (eg Host) are also useful for treating soiled areas. The dry powder is worked into the pile, left to absorb the soiling and then simply vacuumed out.



# CLEANING SCHEDULES

## DAILY CLEANING

Normal soiling should be removed daily with a vacuum cleaner with rotating brush to help release dirt and loose fibres. We highly recommend the Sebo Evolution range with red brushes for a high performance clean. Specialist freezing sprays or gels should be used to remove chewing gum as soon as possible and a pH neutral spot cleaner can also be used where necessary

## QUARTERLY DEEP CLEANING

Always begin with the Daily Cleaning routine before commencing a deep clean. The frequency of deep cleaning will depend on levels of soiling and the amount of traffic into the building.

It is recommended that fibre matting in high traffic areas is deep cleaned at least quarterly using a water extraction machine.

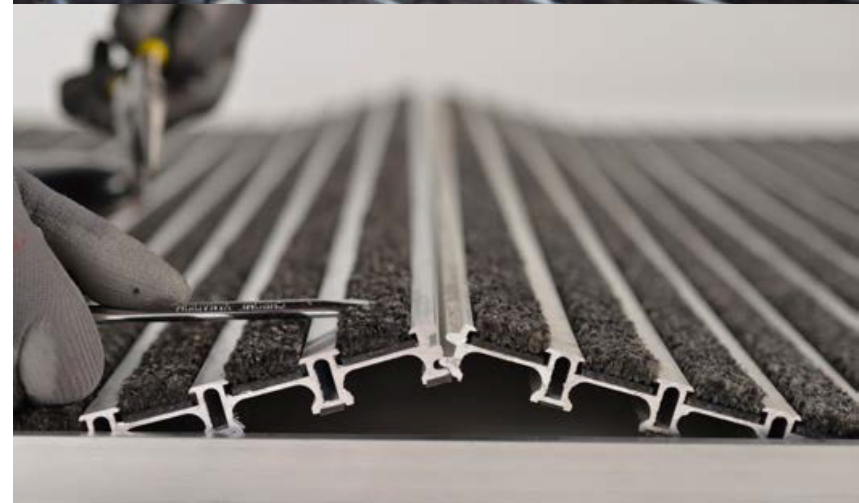
Any debris caught in between the channels of matting should be removed and the channels wiped with a mild detergent to help free any soiling. Ensure all detergent residue is removed to maintain appearance.

Matting should be carefully lifted or rolled back, section by section, and the base of the matwell thoroughly swept/vacuumed, then the matting rolled back into position. Take care not to drag the matting – it is designed to simply roll up and unroll again.

Drainable matwell bases should be thoroughly cleared and cleaned out every 2-3 years.

## ANNUAL MAINTENANCE

Primary matting should be carefully removed from the matwell and sprayed with a high-pressure water machine. Any damaged or worn inserts can be recycled and replaced with minimum cost implications.



## LINT/FIBRE CLEANING TECHNIQUES

Lint /textile fibres and other materials, can get stuck in the pile of the Entrance Matting, making your mat look dull and dirty.

We recommend a rotatory brush vacuum is used daily to thoroughly clean the matting. A vacuum cleaner with rotating brushes is highly effective to help release dirt and loose fibres. We highly recommend the Sebo Evolution range with red brushes for a high performance clean.

## HOW TO REMOVE CHEWING GUM

Specialist freezing sprays or gels should be used to remove chewing gum as soon as possible - failure to remove gum quickly will cause it to become hardened and compacted into the matting surface, reducing performance.

## HOW TO REMOVE DRY SOIL

- Vacuum using an upright vacuum with a mechanically driven rotating brush.
- Make several passes in both directions along the rib of the matting with the vacuum cleaner to ensure all loose dirt is removed. Vacuum action should be fast forward and slow backward.
- Spot clean if necessary.

## HOW TO REMOVE WET SOIL

pH neutral detergent suitable for nylon fibres. Ensure you rinse thoroughly with clean water to remove all detergent residue.

Sebo Evolution  
Vacumn Cleaner  
Range





### **SPOT CLEANING**

Spills should be cleaned up immediately using a clean absorbent cloth or paper towel to absorb as much of the liquid as possible.

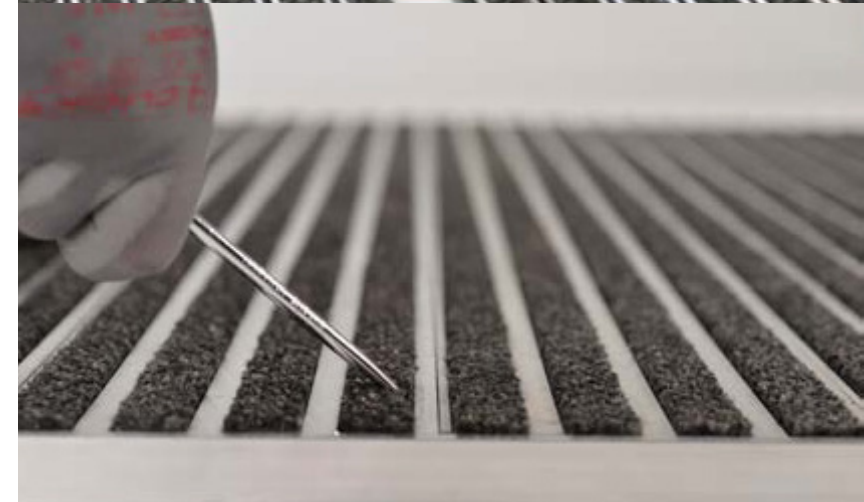
An all-purpose pH neutral spot remover can be used as necessary.

### **RECOMMENDED CLEANING PRODUCTS**

Only pH neutral carpet detergents suitable for nylon fibres should be used, such as M2 Care Ultra.

### **REPLACEMENT INSERTS**

Damaged or unduly worn inserts can be recycled and replaced with minimum cost implications to help extend the life of your matting. Please contact us to discuss the options.



## GENERAL TIPS

Proper maintenance of your entrance matting will help prolong its lifespan.

As with all matting, when subject to heavy wheeled traffic (scissor lifts/pallet trucks etc.) it should be suitably protected with plywood boarding.

INTRAsystems modular design means damaged or worn inserts can be recycled and replaced at minimum cost.

Chewing gum needs to be removed as soon as possible using specialist freezing sprays or gels. Failure to remove gum quickly will cause it to become hard and be compacted into the matting surface, rendering the matting ineffective.

It is recommended that fibre matting in high traffic areas is deep cleaned at least quarterly using a water extraction machine.



# WARRANTY CHART

PRODUCT	3 YEARS	5 YEARS	7 YEARS	10 YEARS	15 YEARS
INTRAform				●	
INTRAform Low Profile				●	
INTRAflex XT				●	
INTRAform DM				●	
INTRAform DM Low Profile				●	
INTRAflex Radial				●	
INTRAflow				●	
INTRAflow Plus					●
INTRAform FR					●
INTRAbrush		●			
INTRALink		●			
INTRALink <sup>2</sup>		●			
INTRALink Low Profile		●			
INTRALux		●			
Gripfit		●			
INTRAshape				●	
INTRAgrille XT				●	
INTRAtech				●	
INTRAdisc			●		
Waterlogic*				●**	●**

\* Drainable support system designed to provide optimum performance in areas of extreme traffic flow and excessive moisture ingress.

\*\* Warranty period is determined by the compatible entrance matting system chosen.

## INTRAsystems manufacturing and material defects warranty.

The warranty covers the structural integrity of the product and is subject to the product application & installation having been carried out in accordance with INTRAsystems recommendations. The warranty confirms that INTRAsystems will repair, or at the INTRAsystems discretion, replace any manufacturing defect within the warranty period which is found to be faulty or below manufacturing standards, or as a result of inferior workmanship or materials. The warranty shall only apply to defects that occur within the warranty period from the date of purchase, provided that the defect is reported to INTRAsystems within the warranty period. The warranty is subject to the correct cleaning and maintenance procedures having been carried out in accordance with INTRAsystems recommendations. The warranty does not cover any faults or defects caused by accidents, misuse, fair wear and tear, neglect, tampering with the matting, or any attempt at adjustment or repair other than through approved INTRAsystems installation partners.





CPD PROVIDER

Find us on:



# INTRA. SYSTEMS

6 COBHAM ROAD, WIMBORNE, DORSET, BH21 7PE

01425 472000 [INTRASYSTEMS.CO.UK](http://INTRASYSTEMS.CO.UK)

