



---

# INTRAFORM<sup>®</sup> LOW PROFILE



# INTRAFORM



# INTRAFORM® LOW PROFILE

Excellent for all areas with restricted matwell recesses or surface mounted applications – offering all the benefits of a heavy duty matting system, in performance, appearance and longevity.

- **Heavy duty** 12mm aluminium matting system
- Suitable for surface mounted applications
- Compatible with full range of inserts
- **Closed construction** – simple to clean and maintain
- Exceptionally hardwearing and durable
- Fully **DDA compliant**, suitable for wheelchair access
- Fully recycled aluminium construction



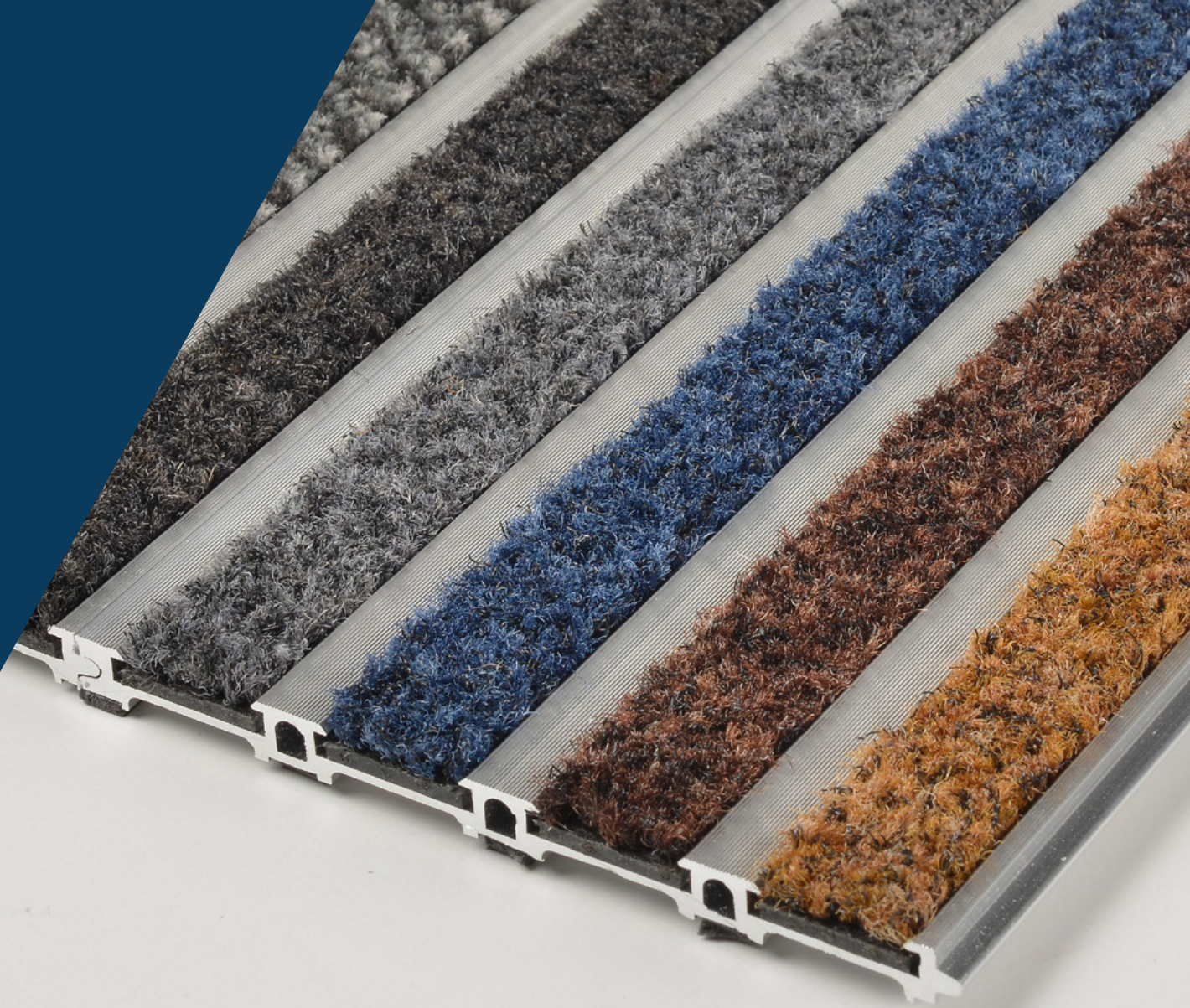
Zonal  
Options



Strength  
Rating



10 Year  
Warranty



**ECONYL®**  
100% Regenerated Nylon

**PUREBASE®**

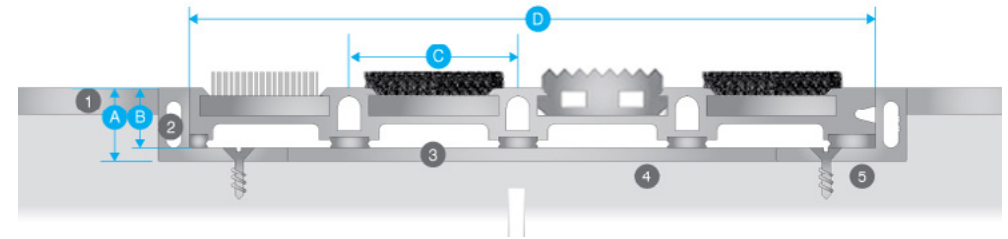


# SPECIFICATION

## INTRAsform® Low Profile

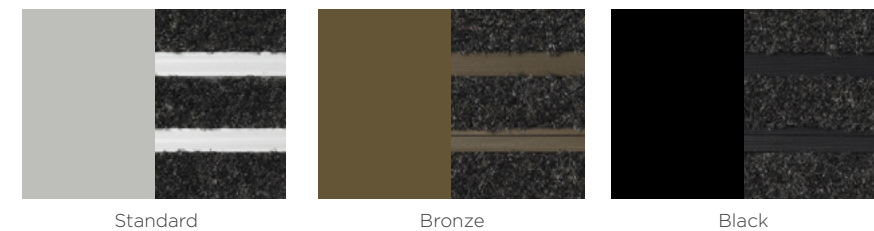
<b>Product Reference</b>	INTRAsform Low Profile recessed entrance matting
<b>Strength Rating</b>	Extreme - suitable for areas with heavy foot and wheeled traffic
<b>Zonal Location</b>	Use Zone 1 inserts for external areas Use Zone 2 inserts for internal areas Combination Zone 1 & 2 inserts can be specified for dual performance
<b>Construction</b>	100% recycled aluminium construction. Closed construction Interlocking Plank system.
<b>Sustainability</b>	100% recycled aluminum. All fibre inserts recyclable/re-usable 100% Econyl® fibre (Elite, Ultimate & Select)
<b>Typical Application</b>	High traffic locations such as shopping centres, commercial Offices etc
<b>Design Options</b>	Bespoke anodised to special order
<b>Weight</b>	11.3kg/m <sup>2</sup>
<b>Matwell Framing</b>	INTO14 & INTR012
<b>Slip Rating</b>	Will vary with insert, in excess of PTV 38
<b>Warranty</b>	10 years
<b>Uniclass 2015</b>	Pr_35_57_11_26 Entrance Mats
<b>CAWS</b>	N10/300 Entrance Matting

## PROFILE



- A 14mm
- B 11mm
- C 33mm profile
- D 132.8mm plank size
- 1 Finished floor surface
- 2 Recessed matwell frame
- 3 Levelling latex to matwell base
- 4 Screed sub-floor
- 5 Screw fixings

## PROFILE COLOUR OPTIONS



Standard

Bronze

Black

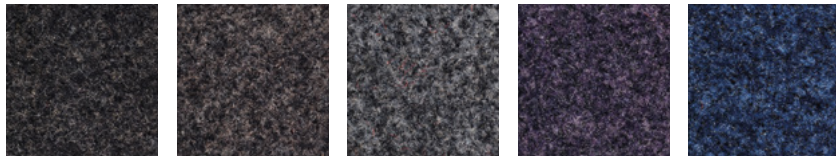


# INSERTS

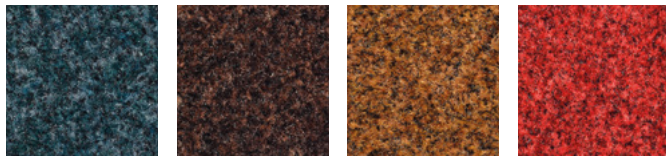
## INSERTS - ZONE 2

### INTRALux® Elite

Recommended for effective scraping and dirt removal

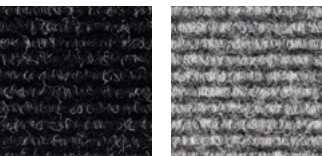


608 Black    607 Anthracite    606 Grey    609 Purple    602 Blue



610 Turquoise    605 Brown    604 Coco    601 Red

### INTRALux® Linear



443 Anthracite    451 Grey

### INTRALux® Select



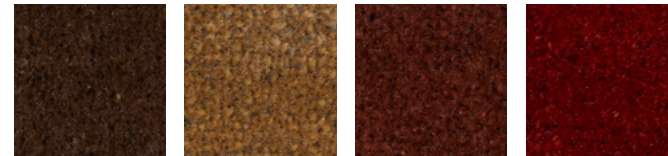
207 Grey    208 Black

### INTRALux® Ultimate

Recommended for rapid moisture absorption



906 Night Sky    907 Anthracite    910 Stone    912 Lichen    913 Forest Green



905 Truffle    904 Sandstone    914 Terracotta    901 Ruby

## INSERTS - ZONE 1



Brush    Fine Brush    Ribbed Rubber    Multi Directional Rubber



# ENVIRONMENT & SUSTAINABILITY

INTRAsystems has an undeviating commitment to act responsibly in its care of the environment. Working on key projects throughout the UK and Europe, the company is familiar with all environmental ratings such as Ska, BREEAM and WRAP to help clients achieve, and exceed, their sustainability goals.

We are ISO 14001 accredited and all production processes are managed in accordance with the Waste Management Act, with a clear goal to 'reduce the production of waste and its harmful effects.' INTRAsystems regularly reviews its wider operations to minimise negative environmental impacts.

Our Environmental Sustainability Statement sets clear targets for ongoing improvement to ensure the company continues to play its part in helping tackle the climate crisis. Environmental credentials for each fibre option are provided and highlighted throughout this brochure.



**BREEAM®**

## **ECONYL®**

### **Benefits of specifying ECONYL® fibre**

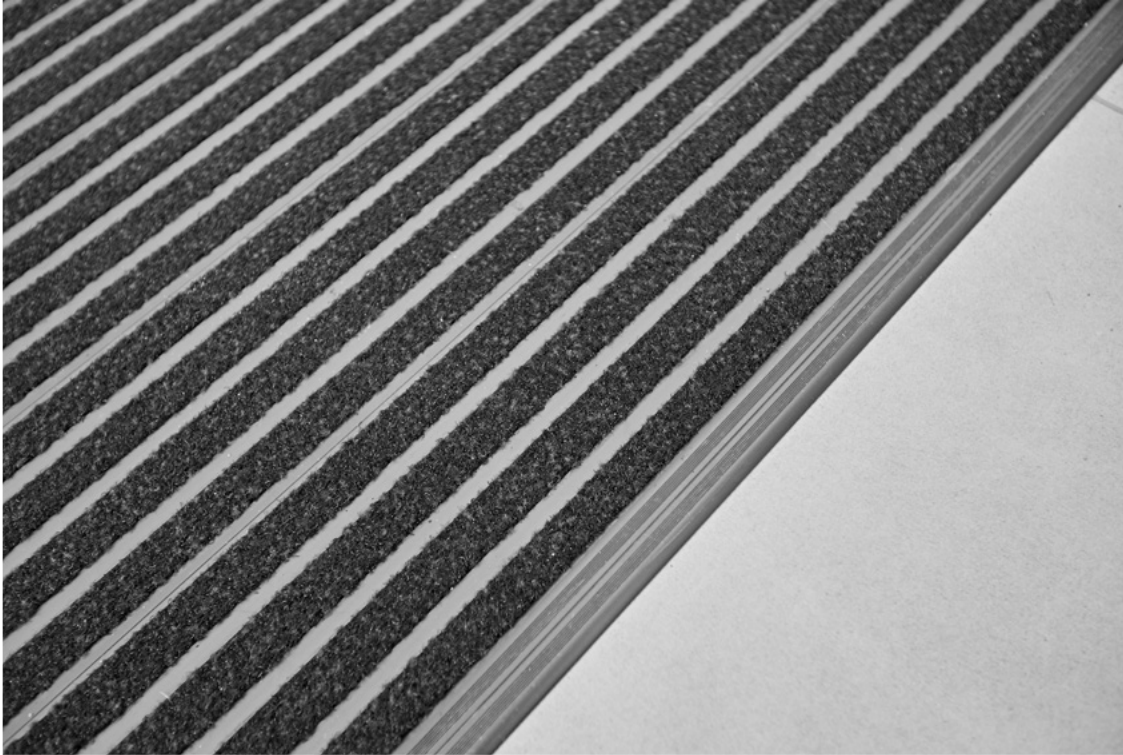
ECONYL® is regenerated nylon that would otherwise pollute the Earth. It is the same as brand new nylon and can be infinitely recycled, recreated and remoulded. ECONYL® is Cradle-to-Cradle certified and therefore our fibres are eligible for LEED® v4 points, as part of the LEED green building rating system.

## **PUREBASE®**


### **Benefits of specifying PureBase backing**

PureBase is a new, PVC-free backing material for entrance matting. It has a significantly lower environmental impact in terms of production processing, greenhouse gas emissions and end of life waste disposal. PureBase is 20% lighter and 3 x more flexible for easier handling and installation.







Find us on:  NBS



# INTRA. SYSTEMS

6 COBHAM ROAD, WIMBORNE, DORSET, BH21 7PE  
**01425 472000 INTRASYSTEMS.CO.UK**

INTRAFORM® LP V1.1