

BREEAM®



INTRAFORM® FR



INTRAFORM



INTRAFORM® FR

Heavy duty aluminium Entrance Matting with specialist fire-resistant and low toxic smoke emission multi-directional inserts (Section 12 compliant). Designed for high risk areas such as underground stations.

- Approved for use in **Underground Stations**
- **Heavy-duty** aluminium plank system
- Designed for areas where **fire safety is critical**
- **Tested to EN45545** – the European railway standard for fire safety
- Suitable for extreme traffic areas, offering **exceptional durability**
- Multi-directional inserts for **optimum performance**
- **100% recycled** aluminium construction



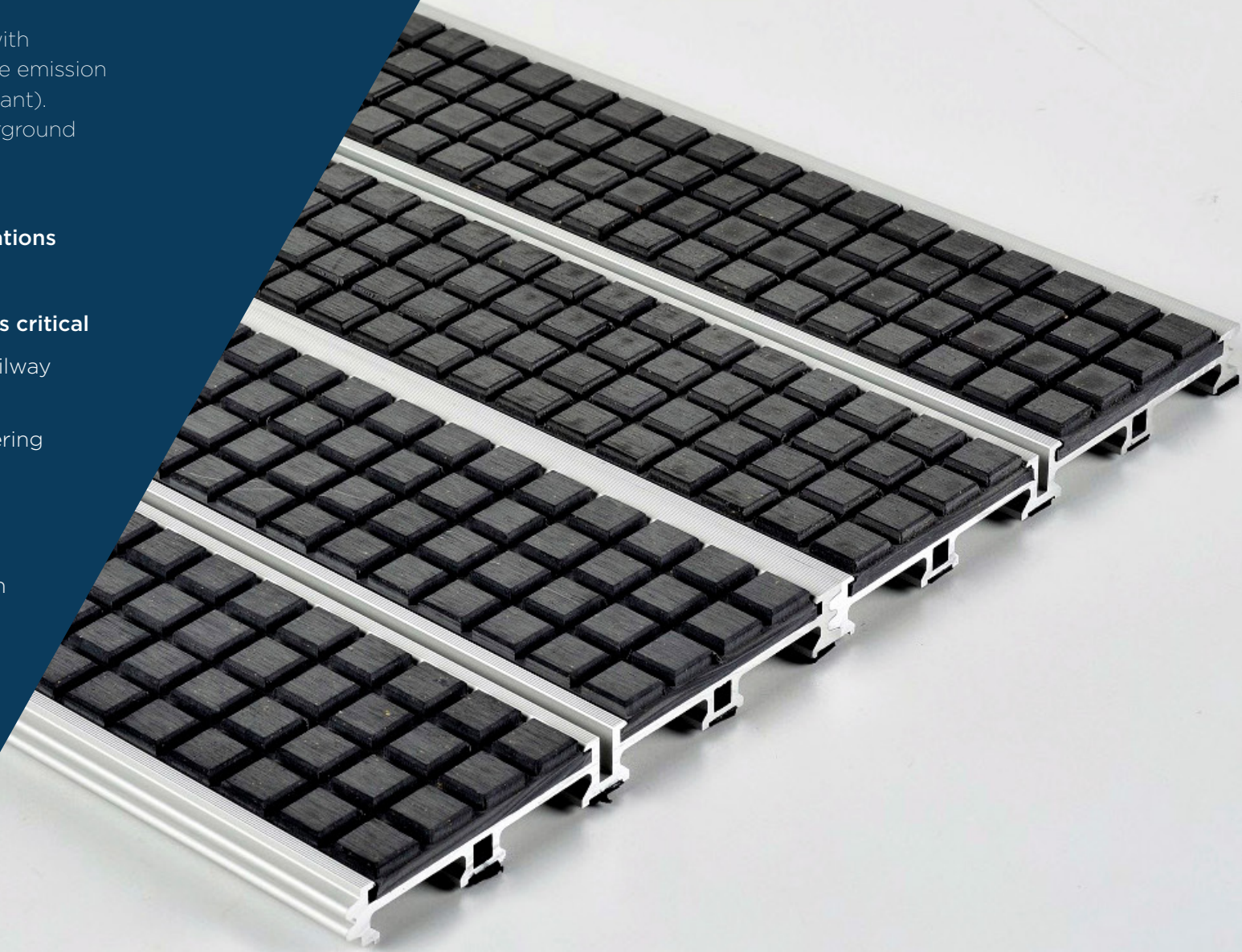
Zonal
Options



Strength
Rating



15 Year
Warranty



ECONYL®
100% Regenerated Nylon

PUREBASE®

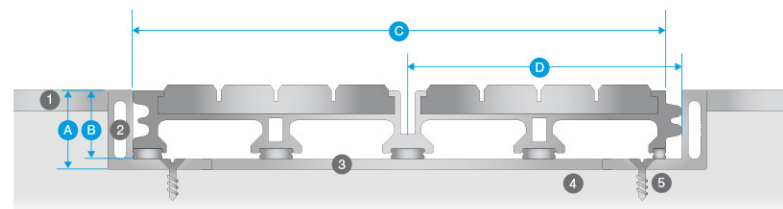


SPECIFICATION

INTRAform® FR

Product Reference	INTRAform® FR Heavy Duty Entrance Matting
Strength Rating	Extreme - suitable for areas with heavy foot and wheeled traffic
Zonal Location	High Traffic environments External Zone 1 Application - FR insert Internal Zone 2 Application - FR insert
Construction	100% recycled aluminium construction Open drainable/closed construction. Interlocking plank system
Sustainability	100% recycled aluminium plank. All inserts recyclable/re-usable
Typical Application	High Traffic locations such as Public Buildings, Commercial Offices, travel termini, Shopping Centres etc
Design Options	Basic range of design options but can be anodised to special order
Weight	19.6kg/m ²
Matwell Framing	INT019
Slip Rating	Will vary with insert, in excess of PTV 38
Warranty	15 years
Uniclass 2015	Pr_35_57_11_26 Entrance Mats
CAWS	N10/300 Entrance Matting

PROFILE



- A 19mm
- B 16.5mm
- C 66.4mm profile
- D 132.8mm plank size
- 1 Finished floor surface
- 2 Recessed matwell frame
- 3 Levelling latex to matwell base
- 4 Screed sub-floor
- 5 Screw fixings

PROFILE COLOUR



Standard

INSERT



Double Module



ENVIRONMENT & SUSTAINABILITY

INTRAsystems has an undeviating commitment to act responsibly in its care of the environment. Working on key projects throughout the UK and Europe, the company is familiar with all environmental ratings such as Ska, BREEAM and WRAP to help clients achieve, and exceed, their sustainability goals.

We are ISO 14001 accredited and all production processes are managed in accordance with the Waste Management Act, with a clear goal to 'reduce the production of waste and its harmful effects.' INTRAsystems regularly reviews its wider operations to minimise negative environmental impacts.

Our Environmental Sustainability Statement sets clear targets for ongoing improvement to ensure the company continues to play its part in helping tackle the climate crisis. Environmental credentials for each fibre option are provided and highlighted throughout this brochure.



BREEAM®

ECONYL®

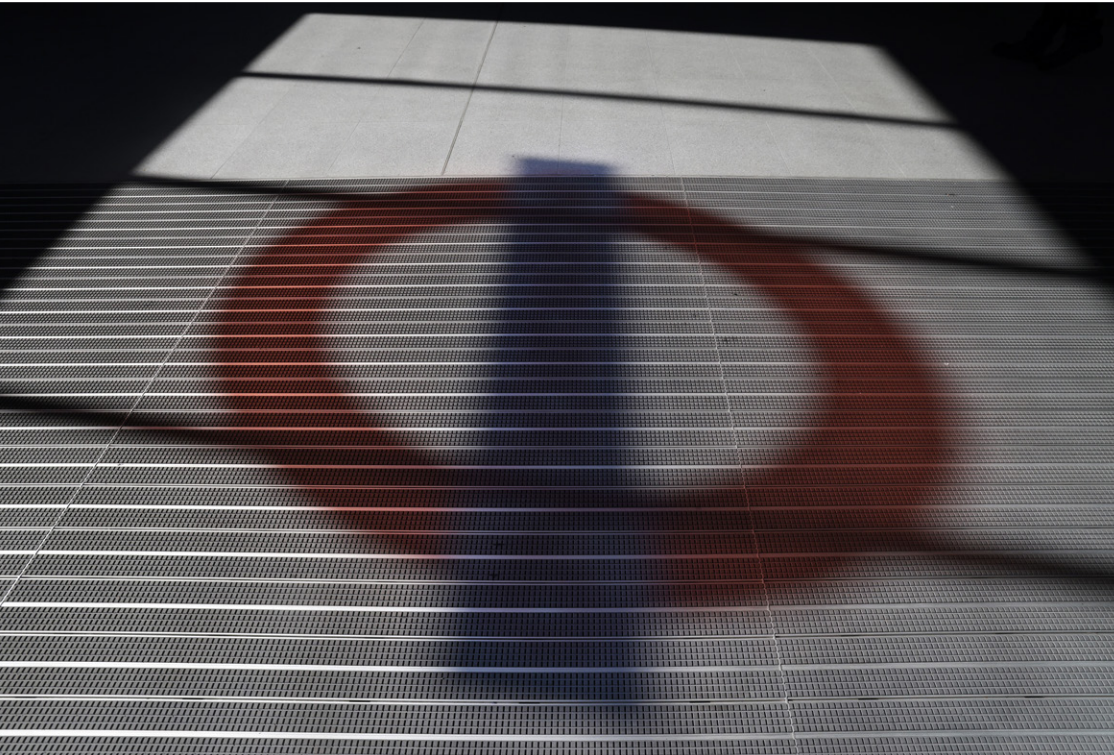
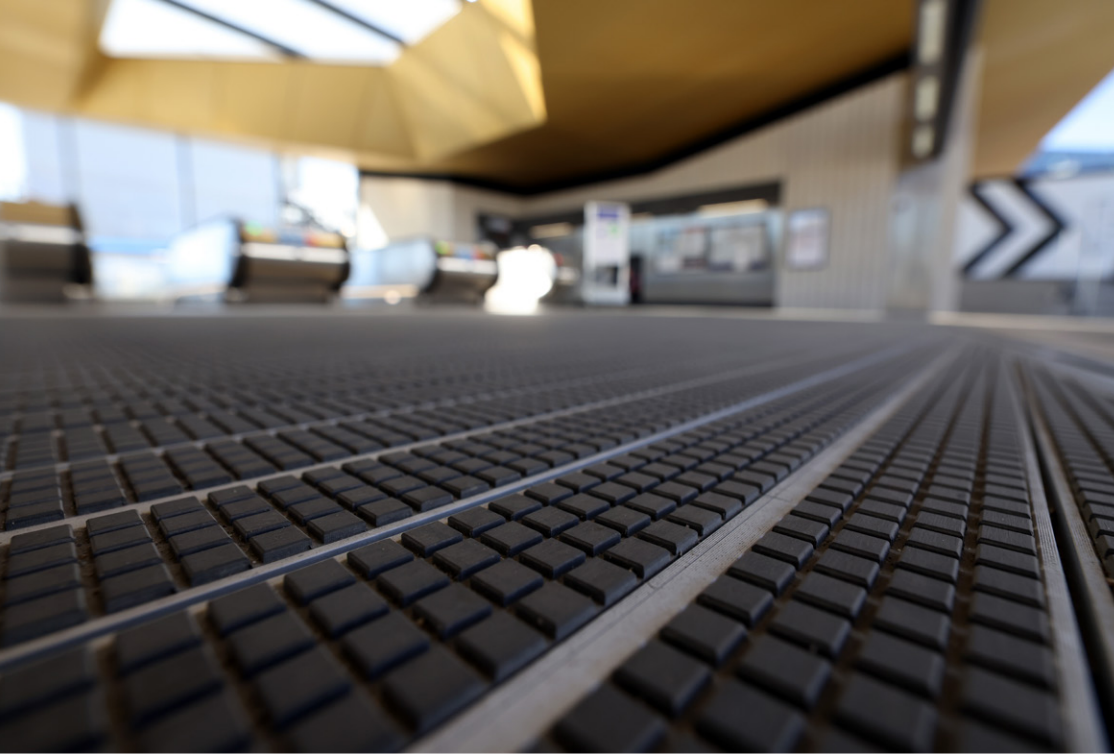
Benefits of specifying ECONYL® fibre

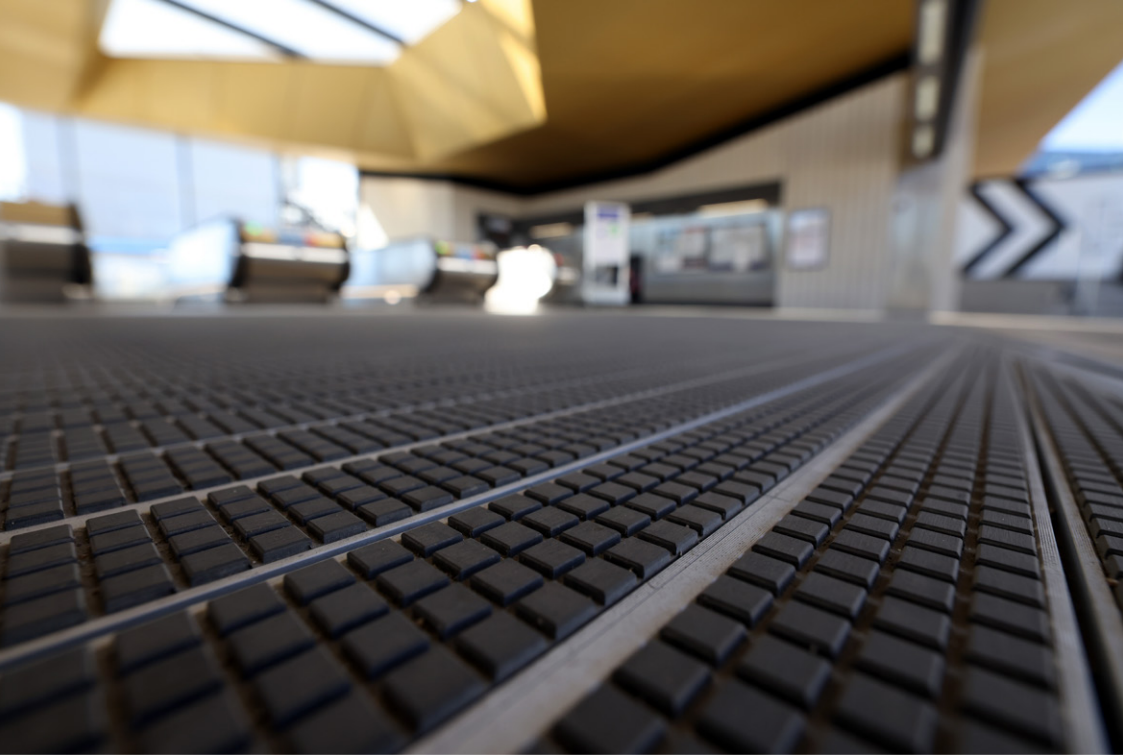
ECONYL® is regenerated nylon that would otherwise pollute the Earth. It is the same as brand new nylon and can be infinitely recycled, recreated and remoulded. ECONYL® is Cradle-to-Cradle certified and therefore our fibres are eligible for LEED® v4 points, as part of the LEED green building rating system.

PUREBASE®

Benefits of specifying PureBase backing

PureBase is a new, PVC-free backing material for entrance matting. It has a significantly lower environmental impact in terms of production processing, greenhouse gas emissions and end of life waste disposal. PureBase is 20% lighter and 3 x more flexible for easier handling and installation.







CPD PROVIDER

Find us on:



binstore



INTRA. SYSTEMS

6 COBHAM ROAD, WIMBORNE, DORSET, BH21 7PE

01425 472000 INTRASYSTEMS.CO.UK

INTRAFORM® FR V1.0