

# INTRAlink

INTRV.

# INTRAlink

A heavy duty modular interlocking tile system, offering **exceptional durability**. It is **flexible, robust and effective** - combining all the key features of a successful Entrance Matting system at **affordable pricing**, without compromising on aesthetics.

- Interlocking Tile format - versatile and easy to install
- Exceptional durability and effectiveness
- Suitable for Internal and External applications
- Heel-proof open construction for effective dirt removal
- Fully Rollable for ease of cleaning and maintenance
- Quality Polyamide Fibre for optimum moisture absorption
- Compatible with electronic tagging systems
- Suitable for high traffic areas  
Schools & Colleges, Shopping Centres, Stations etc.

**Z**  
1&2

Zonal  
Options

↓↓↓  
**HIGH**

Strength  
Rating

**5**

5 Year  
Warranty

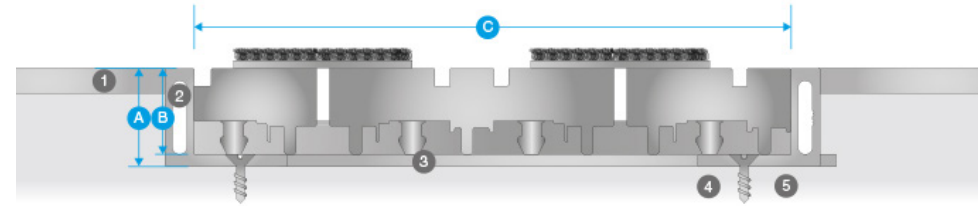
**ECONYL®**  
100% Regenerated Nylon

# SPECIFICATION

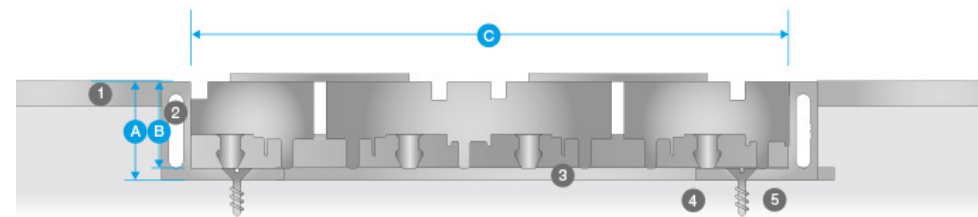
## INTRALink

<b>Product Reference</b>	INTRALink Heavy Duty PVC Grid Entrance Matting INTRALink Plain Heavy Duty PVC Grid Entrance Matting
<b>Strength Rating</b>	High – suitable for areas with heavy foot and wheeled traffic
<b>Zonal Location</b>	High Traffic environments Zone 2 Interior area – with high quality polyamide fibre inserts Zone 1 Exterior area – Plain tile version
<b>Construction</b>	Heel-proof Open Construction Interlocking Tile Format – Tile size 395mm x 135mm UV resistant, hardwearing and elastic PVC – with polyamide fibre inserts
<b>Typical Application</b>	High Traffic locations such as Public Buildings, Commercial Offices, Shopping Centres etc
<b>Design Options</b>	Basic range of design options Packaged in cases of 20 tiles (1.06m <sup>2</sup> ) for ease of delivery and fitting
<b>Weight</b>	12.7kg/m <sup>2</sup>
<b>Matwell Framing</b>	INT019
<b>Slip Rating</b>	Will vary with insert, in excess of PTV 38
<b>Warranty</b>	5 years
<b>Fire Rating</b>	EN13501: Bfl-s1
<b>Uniclass 2015</b>	Pr_35_57_11_26 Entrance Mats
<b>CAWS</b>	N10 / 300 Entrance Matting

## PROFILE



<b>INTRALink</b>	1	Finished Floor surface
A	19mm	2 Recessed matwell frame
B	16mm	3 Levelling latex to matwell base
C	135mm tile module	4 Screed sub-floor
		5 Screw fixings

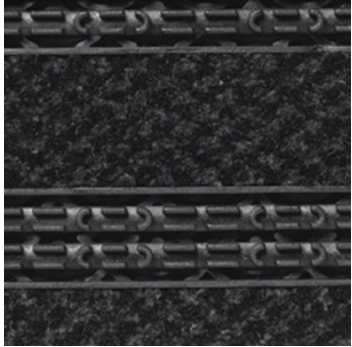


<b>INTRALink Plain</b>	1	Finished Floor surface
A	19mm	2 Recessed matwell frame
B	15mm	3 Levelling latex to matwell base
C	135mm tile module	4 Screed sub-floor
		5 Screw fixings

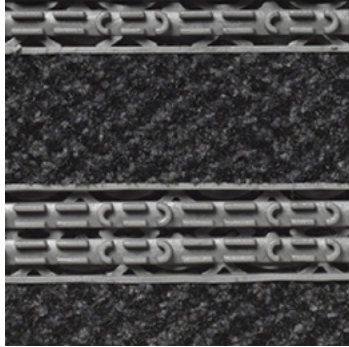
# INSERTS

## Tile colour

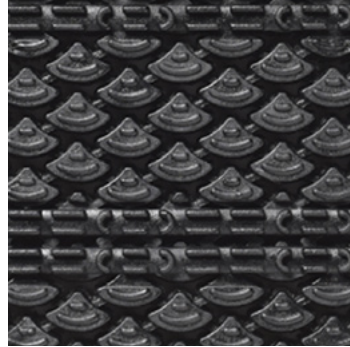
Other colours available upon request



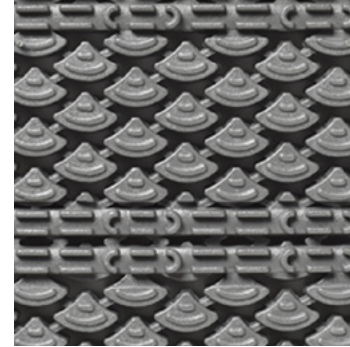
Black & Anthracite



Grey & Anthracite



Black Plain



Grey Plain

# ENVIRONMENT & SUSTAINABILITY

INTRAsystems has an undeviating commitment to act responsibly in its care of the environment. Working on key projects throughout the UK and Europe, the company is familiar with all environmental ratings such as Ska, BREEAM and WRAP to help clients achieve, and exceed, their sustainability goals.

We are ISO 14001 accredited and all production processes are managed in accordance with the Waste Management Act, with a clear goal to 'reduce the production of waste and its harmful effects.' INTRAsystems regularly reviews its wider operations to minimise negative environmental impacts.

Our Environmental Sustainability Statement sets clear targets for ongoing improvement to ensure the company continues to play its part in helping tackle the climate crisis. Environmental credentials for each fibre option are provided and highlighted throughout this brochure.

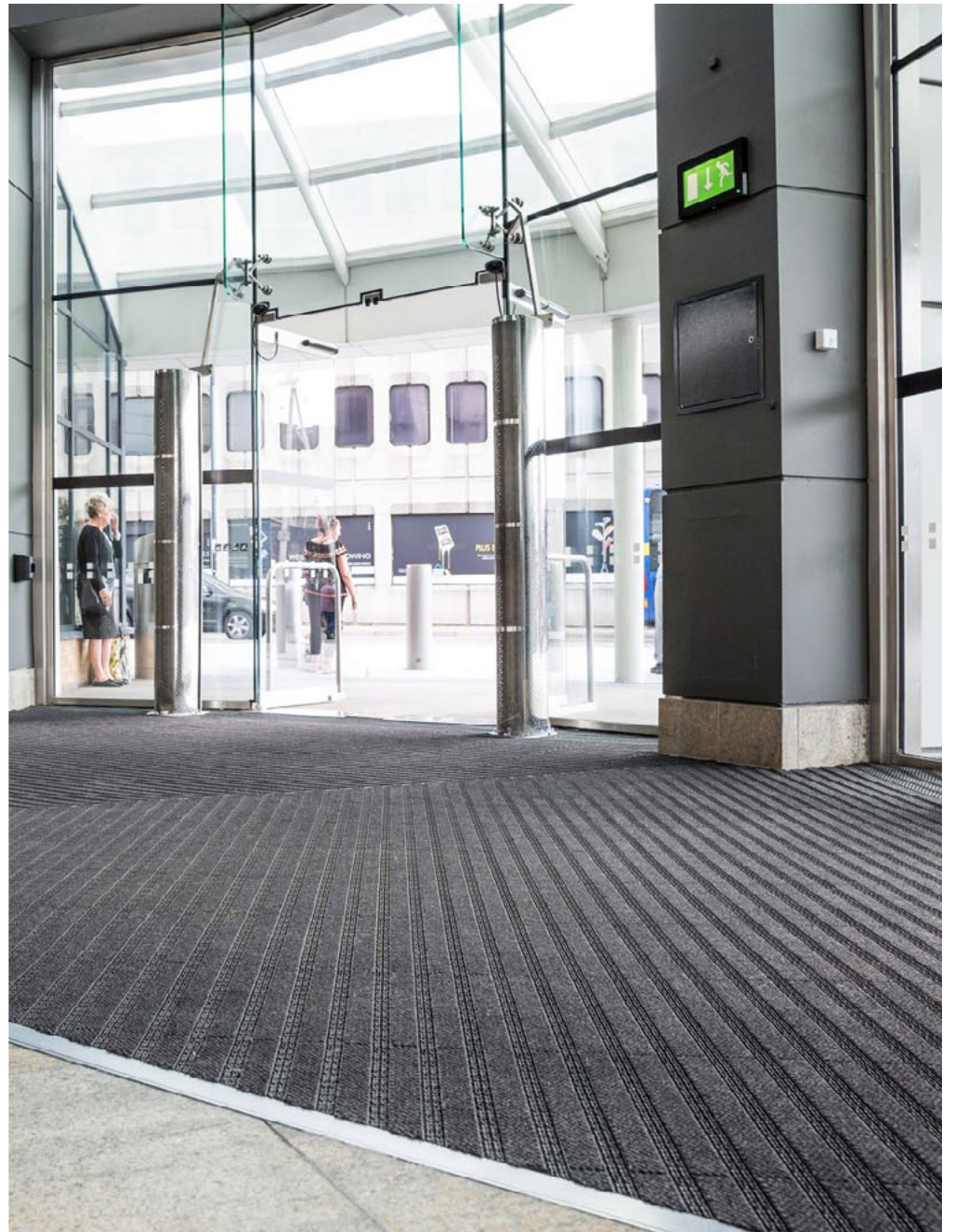
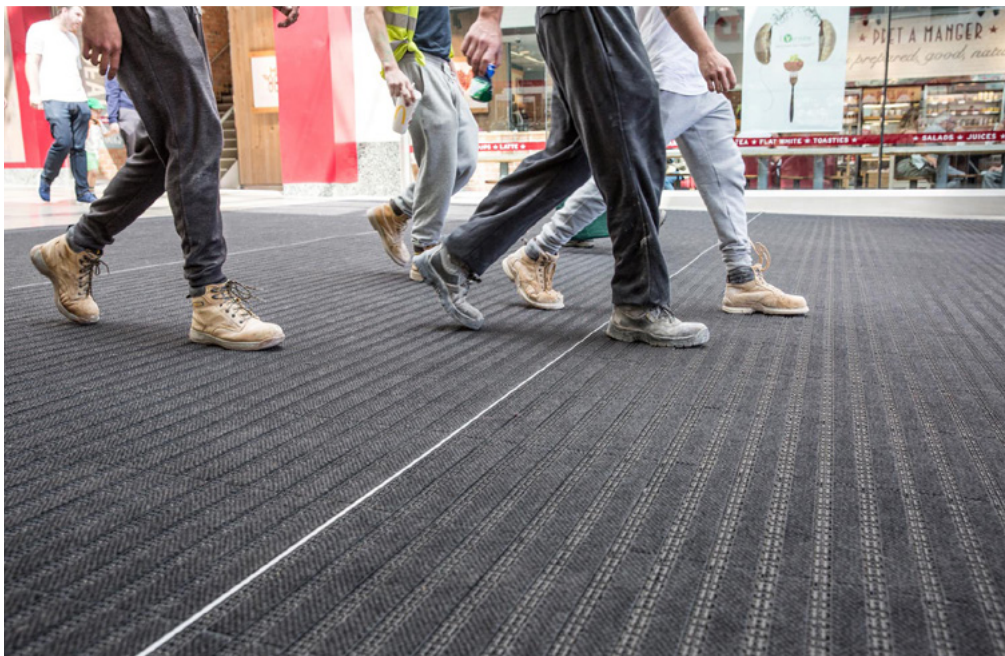


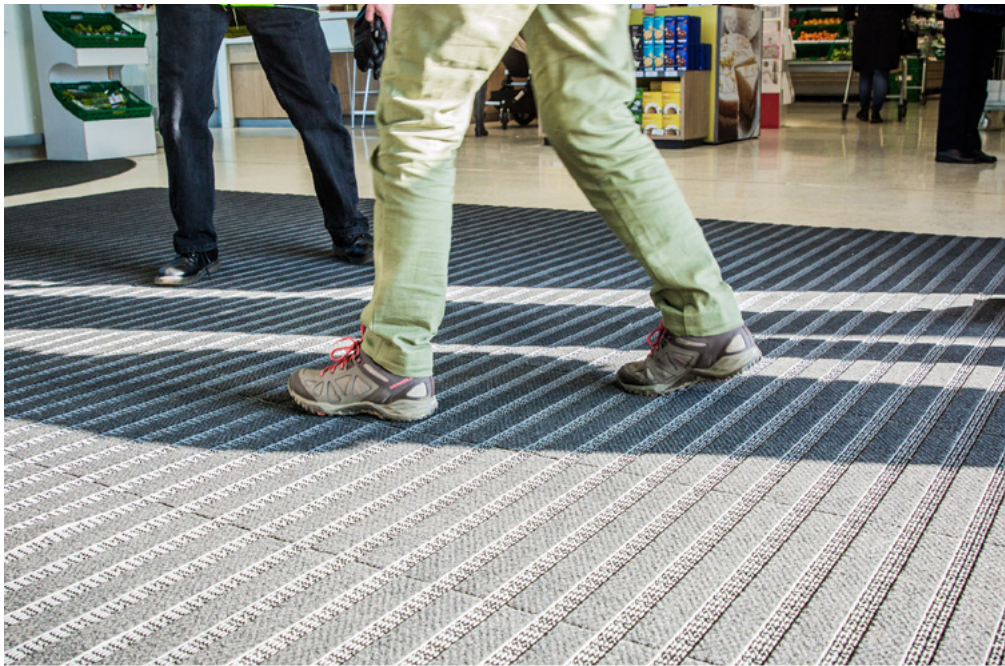
**BREEAM®**

**ECONYL®**

#### Benefits of specifying ECONYL® fibre

ECONYL® is regenerated nylon that would otherwise pollute the Earth. It is the same as brand new nylon and can be infinitely recycled, recreated and remoulded. ECONYL® is Cradle-to-Cradle certified and therefore our fibres are eligible for LEED® v4 points, as part of the LEED green building rating system.







Find us on:  NBS



# INTRALINK. SYSTEMS

6 COBHAM ROAD, WIMBORNE, DORSET, BH21 7PE

01425 472000 [INTRASYSTEMS.CO.UK](http://INTRASYSTEMS.CO.UK)

INTRALINK V1.1