

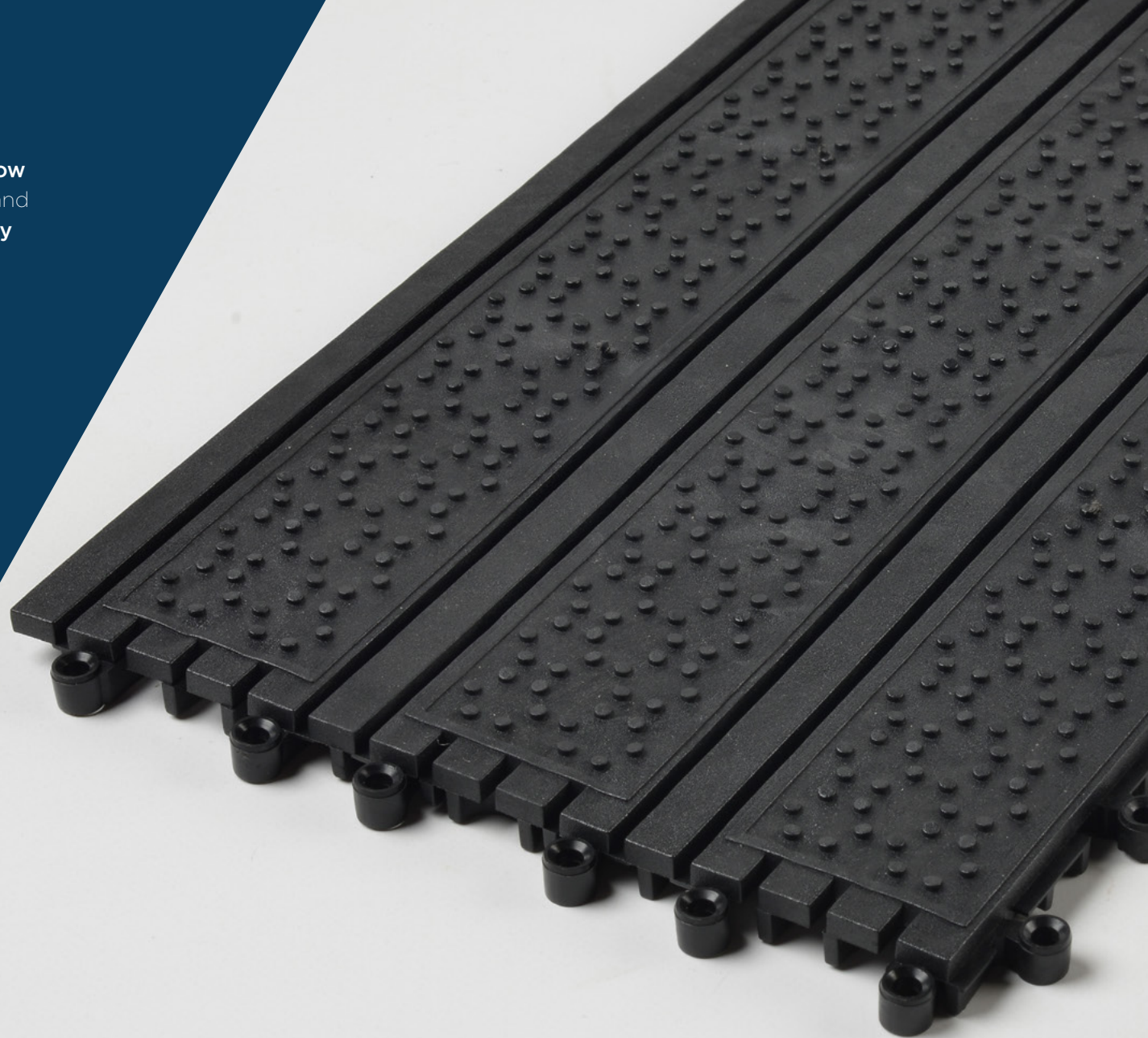
INTRAlink LP

INTRV.

INTRALink LP

A heavy duty interlocking tile system, suitable for **shallow recessed areas** and for **surface mounting**. A versatile and **cost effective system** that offers **exceptional durability and performance** for **high traffic** areas.

- Low Profile design for shallow recessed or surface mounted applications
- Interlocking tile format for ease of installation
- Very durable for high traffic areas
- Dimensionally stable and heel proof
- Quality polyamide fibre inserts for optimum moisture absorption
- Excellent visual appearance
- Compatible with electronic tagging systems
- Plain tile version for external use and as a feature border tile



Zonal
Options



Strength
Rating



5 Year
Warranty

ECONYL®
100% Regenerated Nylon

PUREBASE®

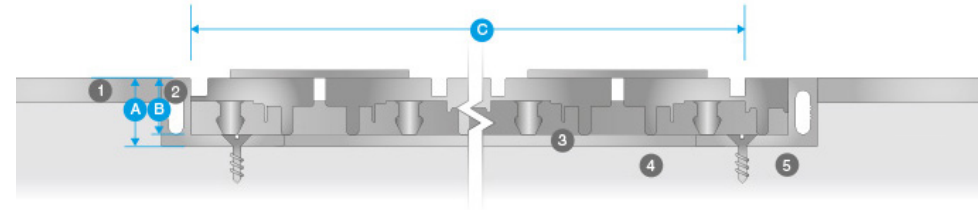


SPECIFICATION

INTRALink LP

Product Reference	INTRALink Low Profile Plain PVC Grid Entrance Matting
Strength Rating	High - suitable for areas with heavy foot and wheeled traffic
Zonal Location	High Traffic environments Zone 2 Interior area - with high quality polyamide fibre inserts Zone 1 Exterior area - Plain tile version
Construction	Heel-proof Open Construction Interlocking Tile Format - Tile size 305mm(L-R) x 183mm (F-B) UV resistant, hardwearing and elastic PVC - with polyamide fibre inserts
Typical Application	High Traffic locations such as Public Buildings, Commercial Offices, Shopping Centres etc
Design Options	Basic range of design optionsPackaged in cases of 18 tiles (1m ²) for ease of delivery and fitting
Weight	8.3kg/m ²
Matwell Framing	INTO14 / INTR012
Slip Rating	Will vary with insert, in excess of PTV 38
Warranty	5 years
Uniclass 2015	Pr_35_57_11_26 Entrance Mats
CAWS	N10 / 300 Entrance Matting

PROFILE



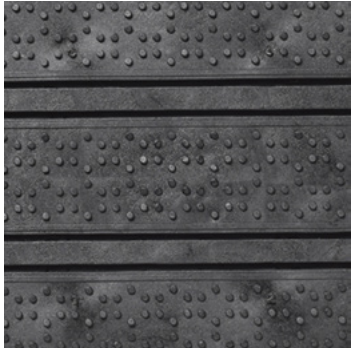
A	14mm	1	Finished Floor surface
B	11.5mm	2	Recessed matwell frame
C	183mm tile module	3	Levelling latex to matwell base
		4	Screed sub-floor
		5	Screw fixings



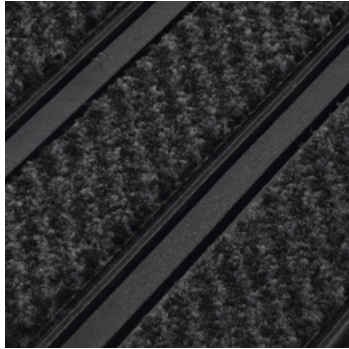
INSERTS

Tile colour

Other colours available upon request



Black & Anthracite



Grey & Anthracite

ECONYL®
100% Regenerated Nylon



ENVIRONMENT & SUSTAINABILITY

INTRAsystems has an undeviating commitment to act responsibly in its care of the environment. Working on key projects throughout the UK and Europe, the company is familiar with all environmental ratings such as Ska, BREEAM and WRAP to help clients achieve, and exceed, their sustainability goals.

We are ISO 14001 accredited and all production processes are managed in accordance with the Waste Management Act, with a clear goal to 'reduce the production of waste and its harmful effects.' INTRAsystems regularly reviews its wider operations to minimise negative environmental impacts.

Our Environmental Sustainability Statement sets clear targets for ongoing improvement to ensure the company continues to play its part in helping tackle the climate crisis. Environmental credentials for each fibre option are provided and highlighted throughout this brochure.



BREEAM®

ECONYL®

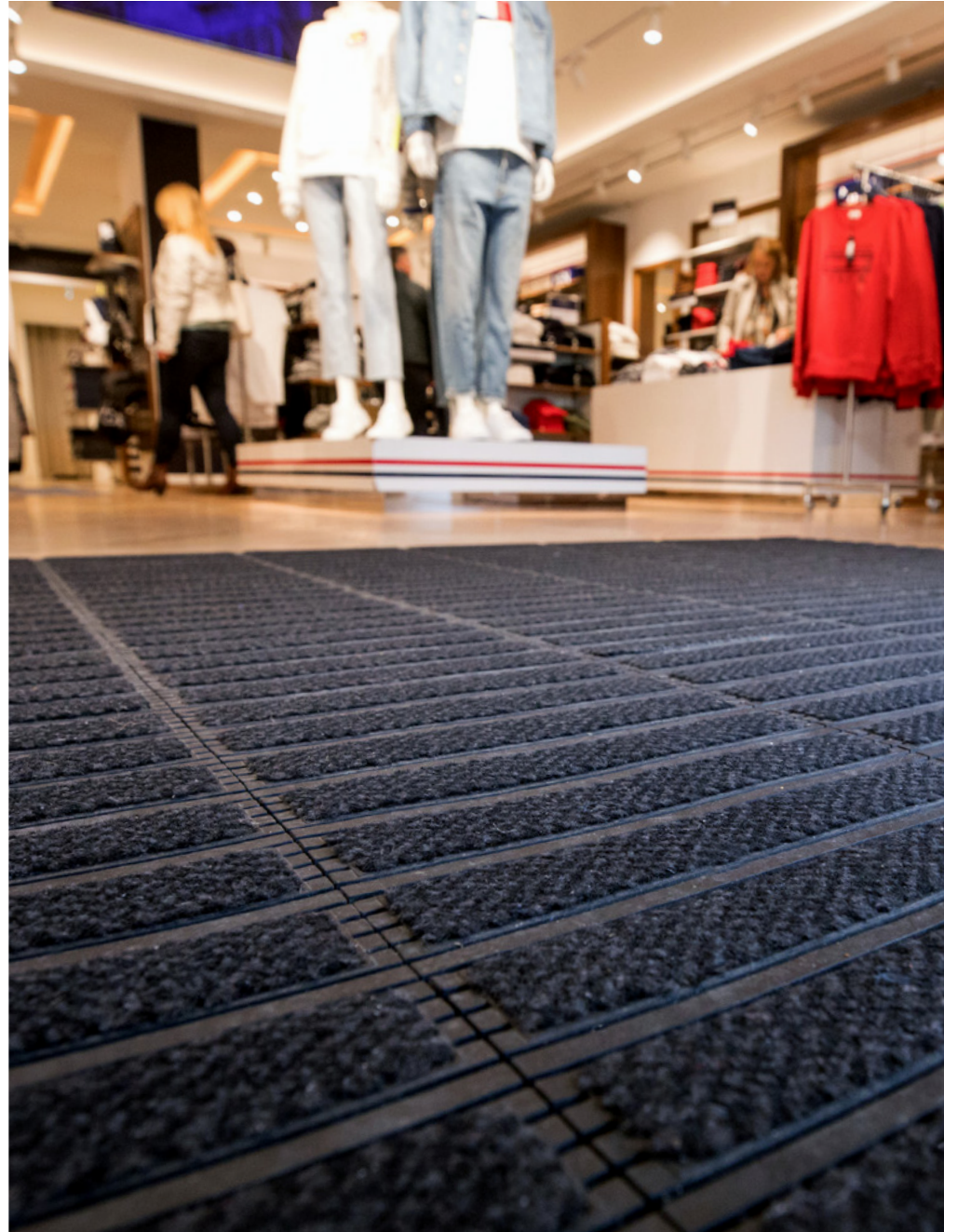
Benefits of specifying ECONYL® fibre

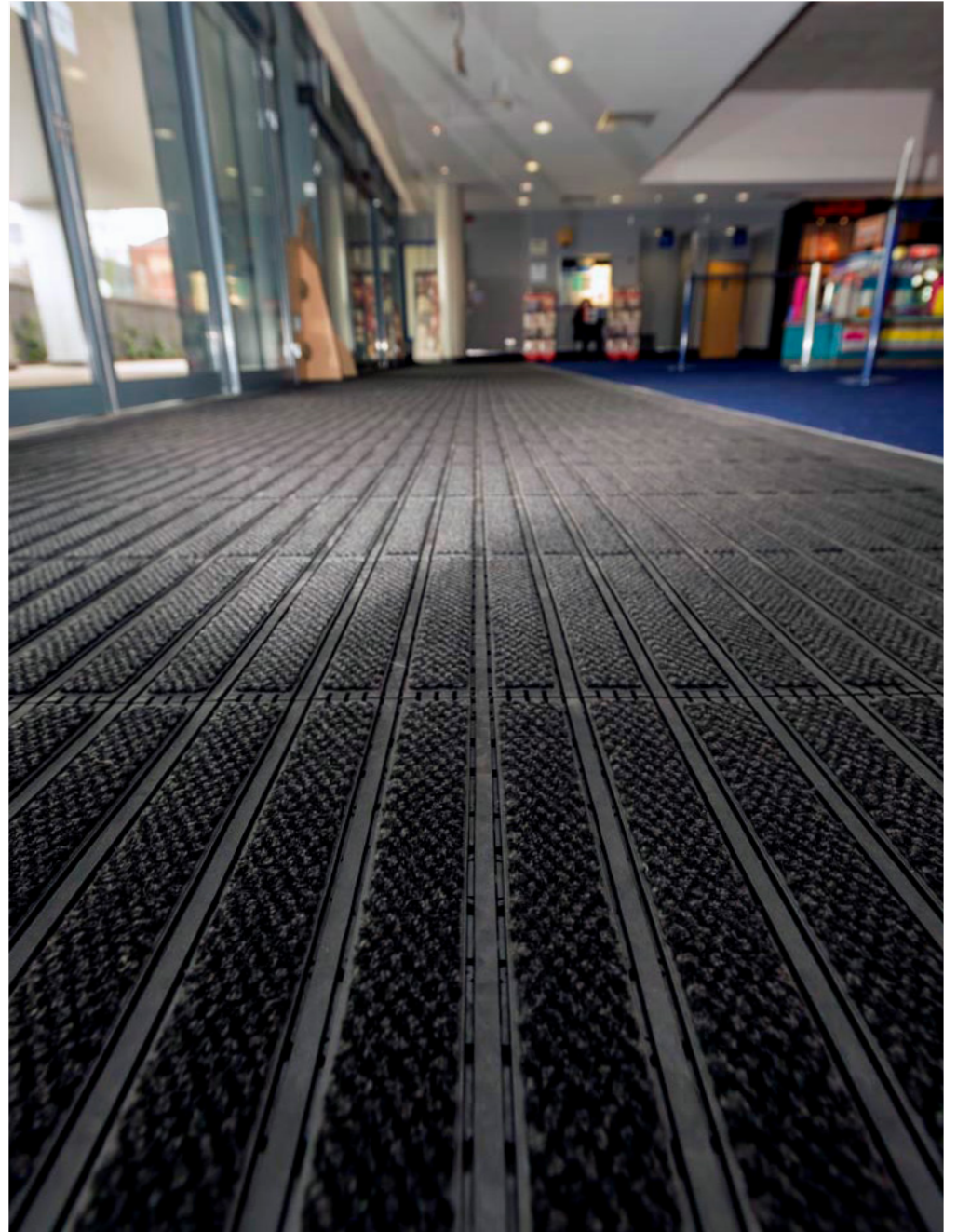
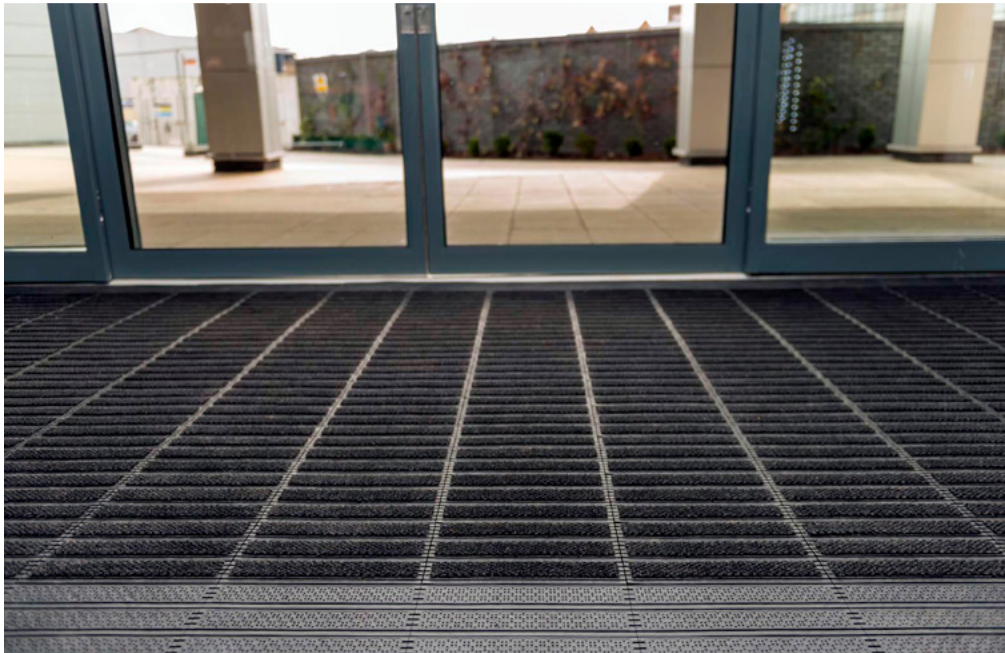
ECONYL® is regenerated nylon that would otherwise pollute the Earth. It is the same as brand new nylon and can be infinitely recycled, recreated and remoulded. ECONYL® is Cradle-to-Cradle certified and therefore our fibres are eligible for LEED® v4 points, as part of the LEED green building rating system.

PUREBASE®

Benefits of specifying PureBase backing

PureBase is a new, PVC-free backing material for entrance matting. It has a significantly lower environmental impact in terms of production processing, greenhouse gas emissions and end of life waste disposal. PureBase is 20% lighter and 3 x more flexible for easier handling and installation.







Find us on:  NBS



INTRALINK. SYSTEMS

6 COBHAM ROAD, WIMBORNE, DORSET, BH21 7PE
01425 472000 INTRASYSTEMS.CO.UK

INTRALINK LP V1.1